

135884  
12-18-89  
4:42

135884

DECLARATION OF RESTRICTIVE COVENANTS RUNNING WITH THE LAND

JOSE ANTONIO VIGIL, the owner of real property situated in Arroyo Seco, Taos County, New Mexico more particularly described in Exhibit "A" attached hereto and incorporated herein by reference entitled "ANTONIO VIGIL" performed by MAESTAS & ASSOCIATES dated September, 1989 as project No. 5189, and recorded at Plat Cabinet C, Page 101-B of the Records of the Taos County Clerk and Recorder, hereby declares the following restrictive covenants to run with land which may be hereinafter conveyed by JOSE ANTONIO VIGIL, his heirs and assigns;

1. Temporary structures, tents, trailers, mobile homes, and outside toilets shall be allowed only during the construction of a permanent dwelling house, and shall be allowed for a period not to exceed one (1) year from the date they are placed there.
2. Not more than one permanent family dwelling and guest house permitted.

Any breach of these restrictions shall not defeat or affect the lien or any mortgage made in good faith for value, but all of the restrictions shall be binding upon any owner whose title is acquired by foreclosure or otherwise.

In the event any one or more of the restrictive covenants contained herein shall be held to be null, void and unenforceable, all remaining restrictive covenants contained herein shall remain in full force and effect.

IN WITNESS WHEREOF, I have hereunto set my hand and seal this 18<sup>th</sup> day of December, 1989.

Jose Antonio Vigil  
 JOSE ANTONIO VIGIL  
 OFFICIAL SEAL  
 EVELYN JEAN ROMERO  
 NOTARY PUBLIC - STATE OF NEW MEXICO  
 My commission expires: 9/9/93

STATE OF NEW MEXICO )  
 ) ss.  
 COUNTY OF TAOS )

LAW OFFICE OF  
 SANTIAGO R. CHAVEZ  
 BOX 6185  
 TAOS, NEW MEXICO 87571

The foregoing instrument was acknowledged before me this 18<sup>th</sup> day of December, 1989 by Jose Antonio Vigil.

My commission expires:  
9/9/93

Luís J. Lora  
 NOTARY PUBLIC

CERTIFICATION  
 All photostatic copies of documents on this film strip are of authorized documents in the possession of the Taos County Clerk's Office as noted in the Statement of Document Certification on file at this office. These documents are routinely microfilmed as a necessary operation in the generation of an up-to-date document file.  
 12-18-89

PROPERTY DESCRIPTION

TRACT "A"

A certain tract of land near Arroyo Seco in Taos County, New Mexico, within the Antonio Martinez Grant, located within projected Section 33, Township 27 North, Range 13 East, N.M.P.M.; described as part of Tract 21, Map 39, Survey 4 of the 1941 Taos County Reassessment Survey, and more particularly described by metes and bounds as follows:

Beginning at a 3/8 inch rebar found for the N.W. corner of this tract, and the true point of beginning, from whence Trilateration Station "Antonio", a 1973 State Engineer Office brass cap monument found, bears S 56° 55' 36" W, 4159.43 feet distant, thence:  
1. 80° 11' 07" E, 131.79 feet to a 1/4 inch rebar found for the N.E. corner of this tract, thence;  
2. 15° 48' 27" E, 338.66 feet to a 1/4 inch rebar found, thence;  
3. 15° 43' 50" E, 113.95 feet to a 1/4 inch rebar found, thence;  
4. 15° 16' 13" E, 7.55 feet to a 5/8 inch rebar set for the S.E. corner of this tract, thence;  
5. 76° 32' 07" W, 150.11 feet to a 5/8 inch rebar set for the S.W. corner of this tract, thence;  
6. 13° 27' 53" W, 468.18 feet to the point and place of beginning.

This tract contains 1.500 acres, more or less.

TRACT "B"

A certain tract of land near Arroyo Seco in Taos County, New Mexico, within the Antonio Martinez Grant, located within projected Section 33, Township 27 North, Range 13 East, N.M.P.M.; described as part of Tract 21, Map 39, Survey 4 of the 1941 Taos County Reassessment Survey, and more particularly described by metes and bounds as follows:

Beginning at a 5/8 inch rebar set for the S.W. corner of this tract, and the true point of beginning, from whence Trilateration Station "Antonio", a 1973 State Engineer Office brass cap monument found, bears S 71° 58' 19" W, 3,924.96 feet distant, thence:

1. 13° 09' 59" W, 199.35 feet to a 5/8 inch rebar set, thence;  
2. 11° 20' 38" W, 125.63 feet to a 5/8 inch rebar set, thence;  
3. 13° 27' 53" W, 290.55 feet to a 5/8 inch rebar set for the N.W. corner of this tract, thence;  
4. 76° 32' 07" E, 150.11 feet to a 5/8 inch rebar set for the N.E. corner of this tract, thence;  
5. 15° 16' 13" E, 216.82 feet to a 1/4 inch rebar found, thence;  
6. 15° 10' 56" E, 181.72 feet to a 1/4 inch rebar found, thence;  
7. 15° 37' 41" E, 152.54 feet to a 1/4 inch rebar found, thence;  
8. 11° 31' 24" E, 37.44 feet to a 1/4 inch rebar found, thence;  
9. 11° 28' 28" E, 10.46 feet to a 5/8 inch rebar set

TRACT "C"

A certain tract of land near Arroyo Seco in Taos County, New Mexico, within the Antonio Martinez Grant, located within projected Section 33, Township 27 North, Range 13 East, N.M.P.M.; described as part of Tract 21, Map 39, Survey 4 of the 1941 Taos County Reassessment Survey, and more particularly described by metes and bounds as follows:

Beginning at a 5/8 inch rebar set for the N.W. corner of this tract, and the true point of beginning, from whence Trilateration Station "Antonio", a 1973 State Engineer Office brass cap monument found, bears S 71° 58' 19" W, 3,924.96 feet distant, thence:

1. 76° 50' 01" E, 176.92 feet to a 5/8 inch rebar set for the N.E. corner of this tract, thence;  
2. 11° 17' 28" E, 283.92 feet to a 1/4 inch rebar found for the S.E. corner of this tract, thence;  
3. 77° 49' 57" W, 24.03 feet to a 5/8 inch rebar set, thence;  
4. 81° 58' 25" W, 19.22 feet to a 5/8 inch rebar set, thence;  
5. 80° 49' 09" W, 60.61 feet to a 5/8 inch rebar set, thence;  
6. 11° 39' 32" W, 23.48 feet to a 5/8 inch rebar set, thence;  
7. 11° 31' 41" W, 31.33 feet to a 5/8 inch rebar set, thence;  
8. 87° 27' 23" W, 38.44 feet to a 5/8 inch rebar set for the S.W. corner of this tract, thence;  
9. 20° 04' 22" W, 42.60 feet to a 5/8 inch rebar set, thence;  
10. 07° 37' 47" W, 23.01 feet to a 5/8 inch rebar set, thence;  
11. 13° 09' 59" W, 165.93 feet to the point and place of beginning.

This tract contains 1.000 acres, more or less.

All microphotographic images of documents in this strip are of authorized documents in the possession of the Taos County Clerk's Office as noted in the Statement of Documents Certification on file at this Office. These documents are routinely microfilmed as a necessary operation in the operation of an electronic document file.

1. 29.35 feet to a 1/2 inch  
 W. corner of this tract, thence;  
 2. 07° E. 150.11 feet to a 5/8 inch rebar set  
 the N.E. corner of this tract, thence;  
 3. 16° 13' E. 216.82 feet to a 1/4 inch rebar found,  
 hence;  
 4. 10° 56' E. 181.72 feet to a 1/4 inch rebar found,  
 hence;  
 5. 37° 41' E. 152.54 feet to a 1/4 inch rebar found,  
 hence;  
 6. 31° 24' E. 33.44 feet to a 1/4 inch rebar found,  
 hence;  
 7. 17° 28' E. 30.46 feet to a 5/8 inch rebar set  
 or the S.E. corner of this tract, thence;  
 8. 50° 01' W. 176.92 feet to the point and place  
 of beginning.  
 Tract contains 2.105 acres, more or less.

BASIS OF BEARING: Bearings of this survey are based on the  
 1973 State Engineer Office published bearing  
 between triangulation Stations "Antonio" and  
 "Seco".

I, Joseph R. Maestas, New Mexico Registered Land Surveyor,  
 Number 9764 do hereby Certify that the survey and plat as  
 shown were made by me or under my supervision and that the  
 same is true and correct to the best of my knowledge.



*Joseph R. Maestas*

CERTIFICATION  
 All microphotographic images of documents on this file strip  
 are of authorized documents in the possession of the Tax  
 Equity Clerk's Office as noted in the Statement of Document  
 Certification on file at this office. These documents are  
 routinely microfilmed as a necessary operation in the  
 operation of an Equalizer Document file.

1298-29

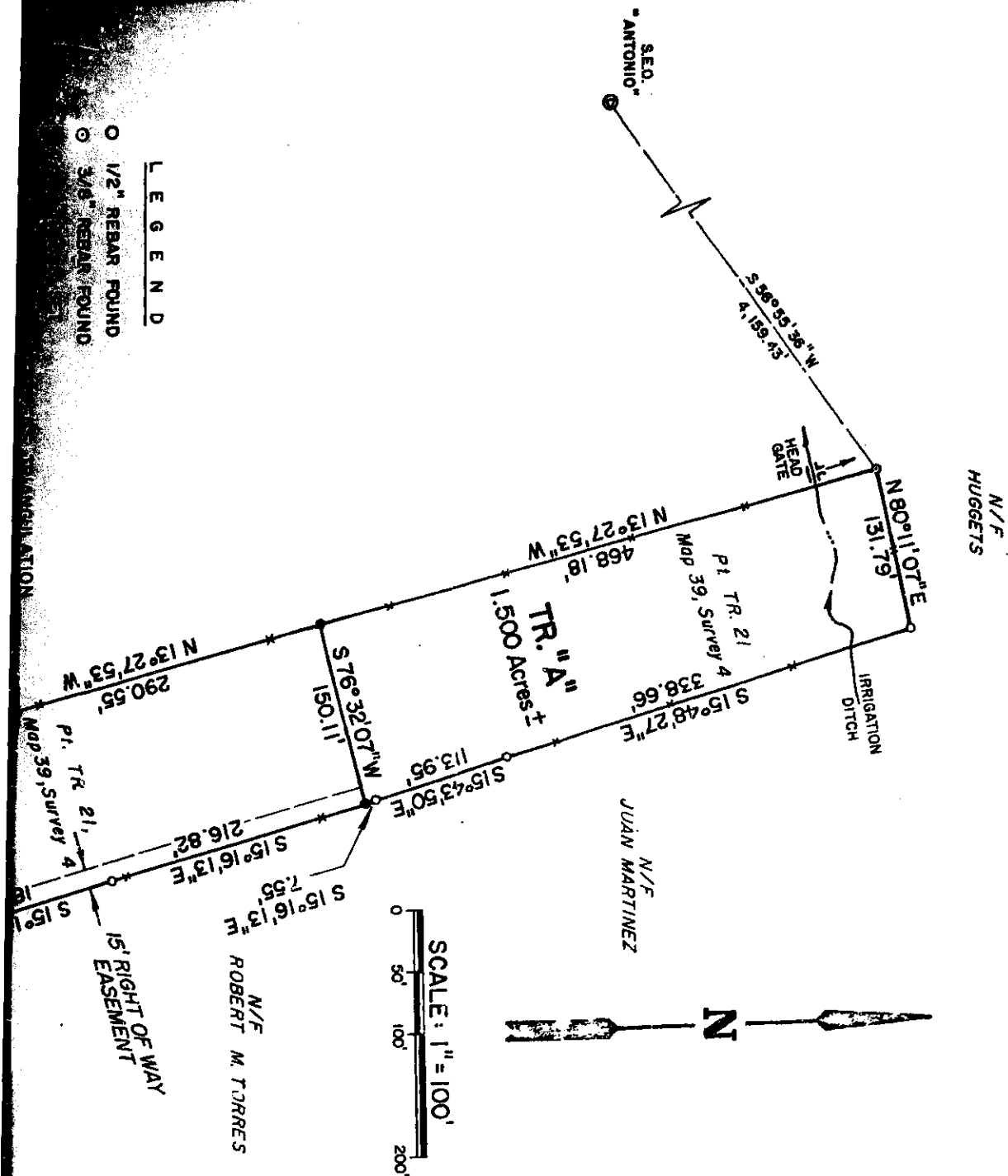
619

PROPERTY SURVEY FOR:



Sublot "A"

- LEGEND**
- 1/2" REBAR FOUND
  - 3/8" REBAR FOUND



**TRACT**

New M  
Proj  
Descr  
Cont  
metes

this  
angul  
cap. m  
Client

THIS

TRACT

See N  
proj  
descr  
cont  
metes  
by me

this  
tract  
brans  
distan

ALL microphotographic images of documents on this film strip are of authorized documents in the possession of the Tular County Clerk's Office as noted in the Statement of Document Certification on file at this office. These documents are routinely microfilmed as a necessary operation in the generation of an updated document file.

1298-29

